

PEOPLE PROGRAM Fall NEWSLETTER



info@peopleprogram.org
www.peopleprogram.org

MAIN CAMPUS
2240 Lakeshore Drive
New Orleans, La. 70122
504-284-7678

WEST BANK CAMPUS
6201 Stratford Pl.
New Orleans, La. 70131
504-394-5433

September 19, 2016

Church on Tulane. Please refer to the list of needs provided for you on each campus .Please be generous!





Mark Your Calendars!

Flu Shots
Tuesday, September 20
Lakeshore - 9 a.m. to noon.
Please sign up and fill out a required form.

Tuesday, September 20, 1 p.m.
Lakeshore
Tuesday, September 27, 1 p.m.
West Bank
Amelia Robert will do a special presentation on updates for hurricane preparedness and evacuation options. An abundance of information!

Monday, September 26, 2 p.m.,
Lakeshore
Tuesday, October 4, 1 p.m.
WestBank
Derek Grantz will present vital information on changes to Medicare. Don't miss this important session!

Tuesday, October 4, 1 p.m.
Lakeshore Campus
Playright, Lisa D'Amour, will discuss her inspiration for her Broadway play, "Airline Highway"! Lisa holds a B.A. in English and Theater from Millsaps College and a M.F.A. from the University of Texas in Austin. Come and enjoy this unique discussion of a New Orleans inspired production.
Refreshments served!

Wednesday, October 19, 2 p.m.
Alan Richey will be discussing the important topic of how to avoid scams when investing your money for the future. A MUST hear!!!
(Lakeshore)

Monday, October 31, 1 p.m.
Halloween party at the Lakeshore campus! "Gumbo Marie", Dianne Honore, will be here to share with us all the ghost stories

People Program has always been positively impacted by partnering with **Tulane Medical School - Aging Studies Program.** **Skylar Lewis**, an intern studying for her PhD, will be on campus to begin a class to discuss **misconceptions and myths about growing old.**

The topics will include: sexuality, the impact of genetics, HIV/STI risks, aging and eating, and staying active.

You are invited to come and learn the newest information on these important topics.

Start: Mon. Oct 3, 1-1:55 p.m.

End: Mon. December 5

Sign-up at the front desk.

(Lakeside)



During the month of **October**, People Program will once again collect toiletries and food for **Lantern Light**, a homeless day shelter located behind St. Joseph

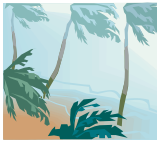


surrounding our haunted city of New Orleans! Wear your favorite costume...refreshments served!



Monday, November 7 – Friday November 11.....Lakeshore Fall Fest Week!

Instead of celebrating on just one Saturday, why not enjoy festivities the whole week while everyone is here! Different lunches will be sold each day along with baked goodies from our members! We are asking that 4 different classes volunteer to prepare a lunch during this special week. See Jan about more details.



People Program closure and early dismissal policy:

People Program will close OR offer early dismissal when **any** of the following schools announce the same:
Orleans Parish Public, Catholic, Magnet or Charter schools

These announcements may be due to weather conditions, or any other emergency. Please be alert.

.....
“The secret to staying young is to live honestly, eat slowly and lie about your age!”

Lucille Bal

Prayers Needed

- Barbara St. Romain
- Anna Rita Williamson
- Richard Beverly
- Doris Phillips
- Tay D’Amour
- John Knipmeyer
- Ed Howell
- Grace Harrison
- Lory Rummel
- Janet Peterson
- James Adams
- Molly Ballay
- Cindy Victor
- Pearl Nedd
- Lee Smallwood
- Mary Ann Bolton
- Elton Toups
- George Krippner
- Armand Lagarde
- Ruth Earhart
- Helen Winder
- Richard Beverly
- Sr. Janine Beniger
- Karen Gibson
- Margie Boe
- Marilyn Estis
- Edgar Dalsob
- Martha Wall
- William Washington
- Sara Carp
- Jude Benfatti
- Oliver Delacroix
- Crystal Arnold
- Gwendolyn Johnson
- Harold Heim
- Wayne Peacock
- Marlene Bernudi



In Memoriam

- Janet Bell
- Alma Jacques Woodfork
- (Sister of Dorothy Perrault)



HMMMMM.....

No piece of paper can be folded more than 7 times. Oh, go ahead, I’ll wait.

Donkeys kill more people annually than plane crashes or shark attacks.

Apples, not caffeine, are more efficient at waking you up in the morning.

Most dust particles in your house are made from DEAD SKIN!

The first owner of the Marlboro Company died of lung cancer. So did the first “Marlboro Man”.

Walt Disney was afraid of MICE!!!

Dentists recommend that a toothbrush be kept at least 6 feet away from a toilet to avoid airborne particles from the flush. (I keep my toothbrush in the living room now!)

